

DO NOT SCALE. IF IN DOUBT ASK. ALL DIMENSIONS IN MILLIMETRES UNLESS OTHERWISE STATED.

**PRESSURE TEST
(TO NGN/PM/PT/1 & IGE/MD/13)**

| SECTION | HYDROSTATIC TEST PRESSURE | DURATION | PNEUMATIC LEAK TEST PRESSURE | DURATION |
|-----------------------------|---------------------------|----------|------------------------------|----------|
| NEW 150NB HP PIPEWORK | 105 BARG | 2 HRS | CURRENT O.P. | 10 MINS |
| NEW 25NB IP PIPEWORK | 10.5 BARG | 0.5 HRS | CURRENT O.P. | 10 MINS |
| NEW 90PE & 50NB MP PIPEWORK | - | - | 3.0 BARG | 15 MINS |

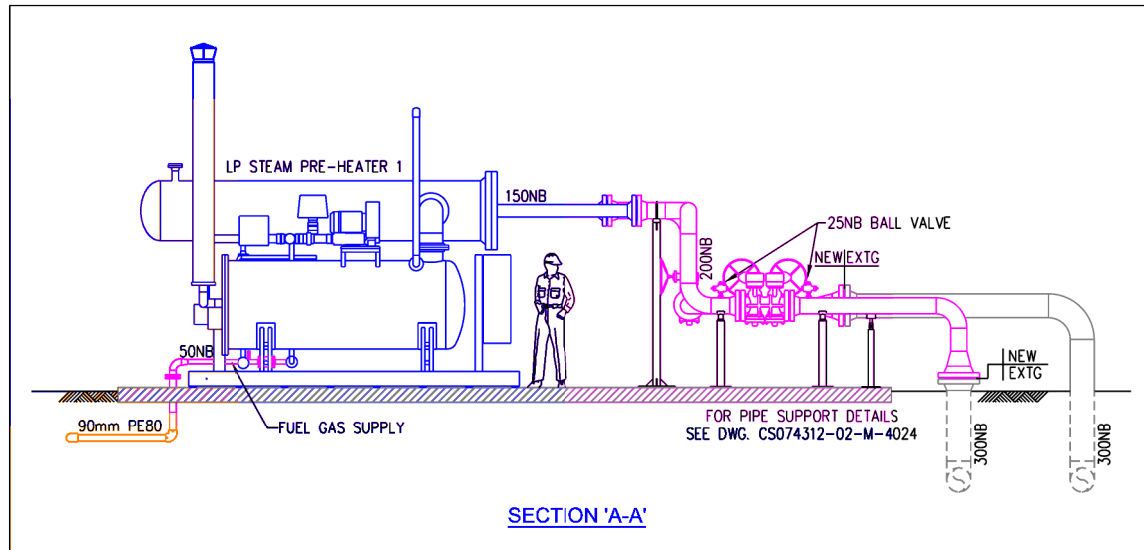
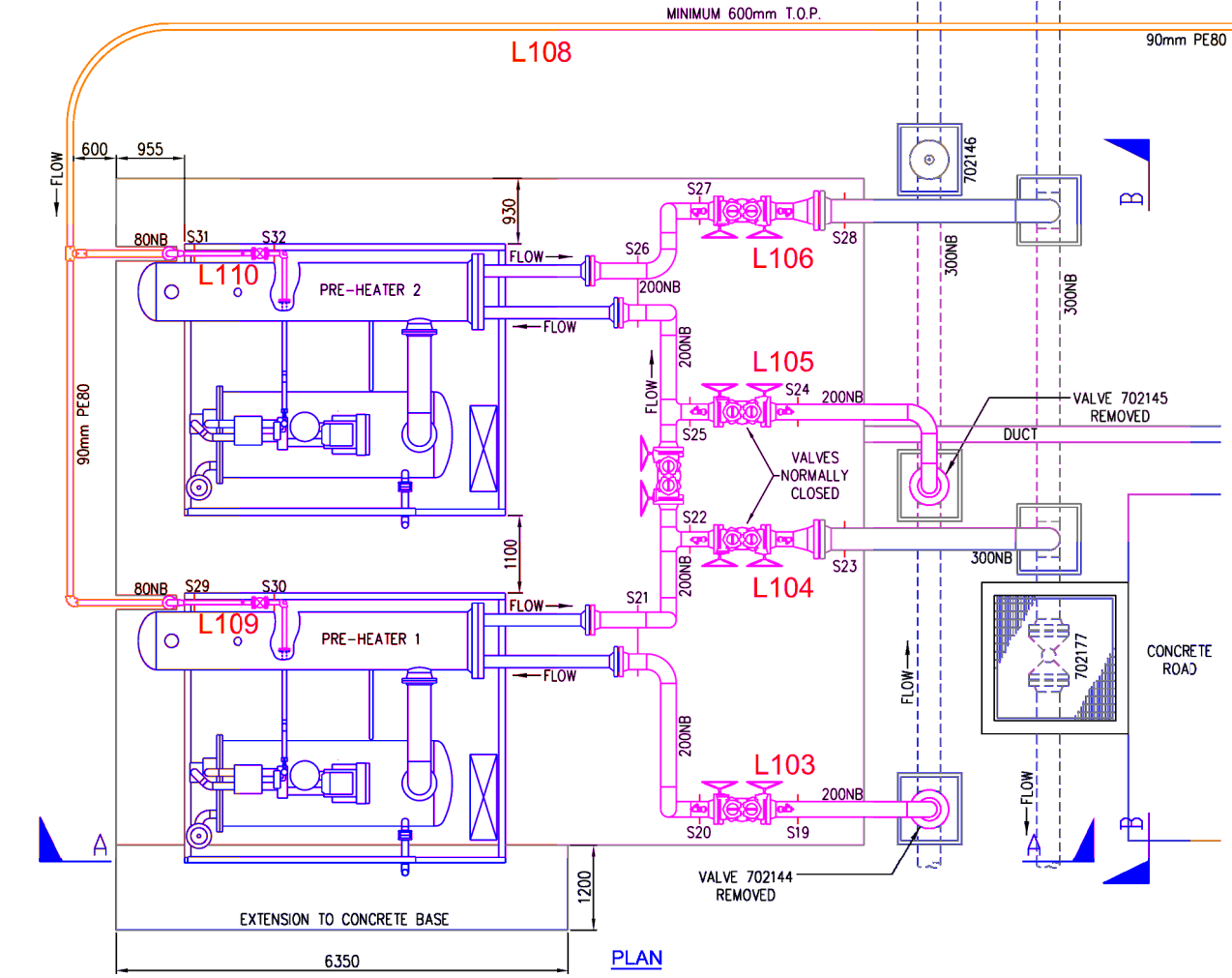
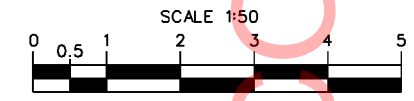
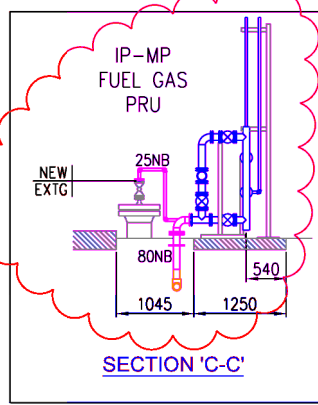
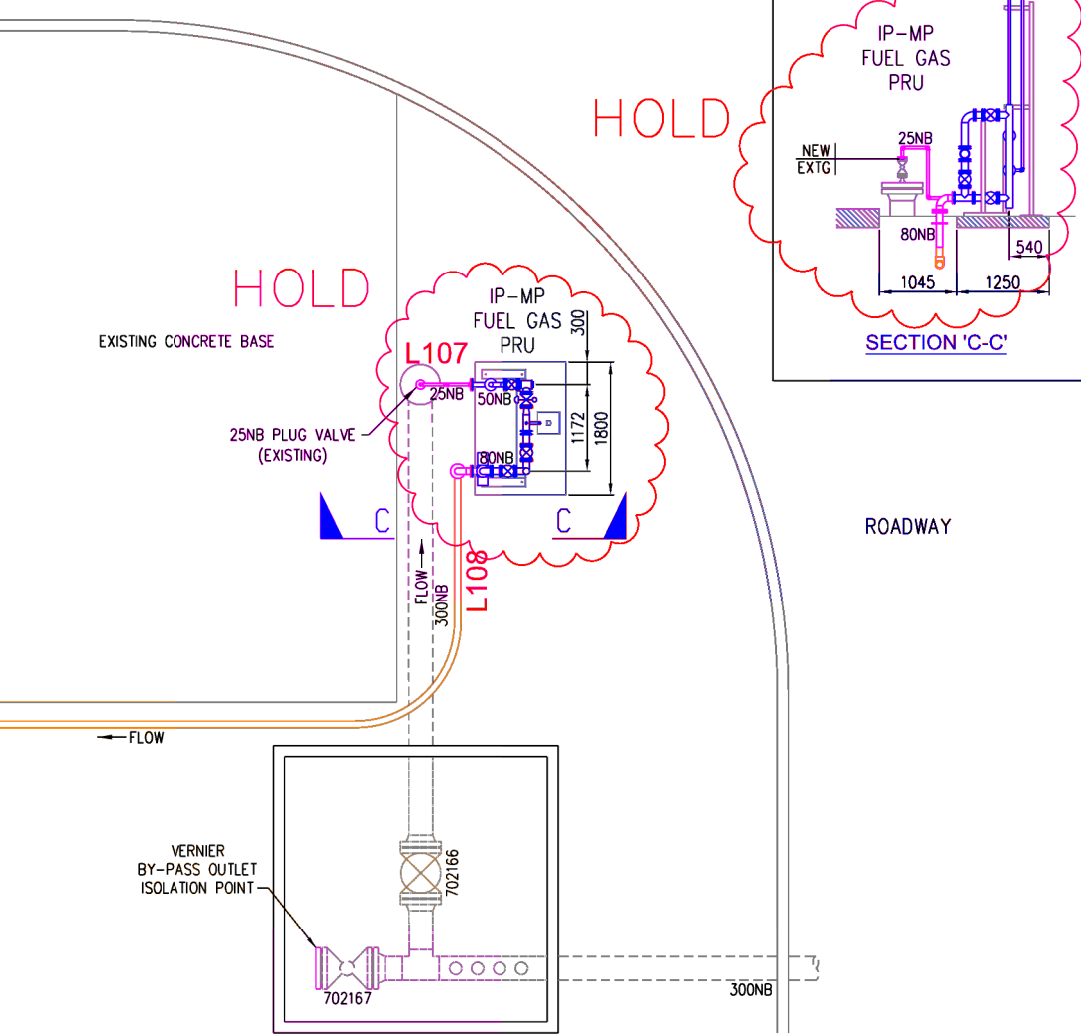
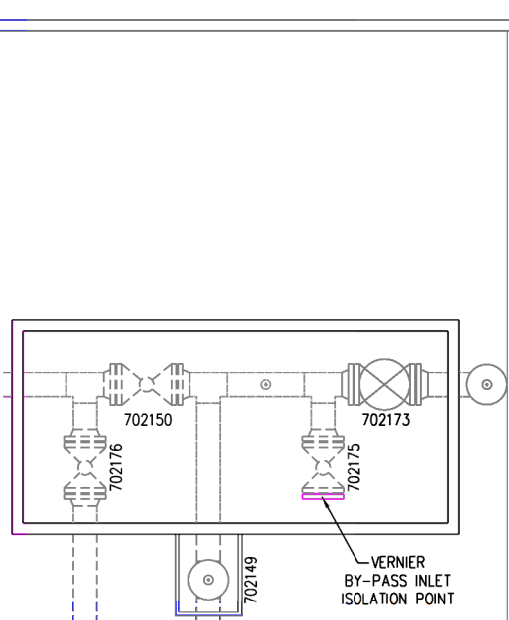
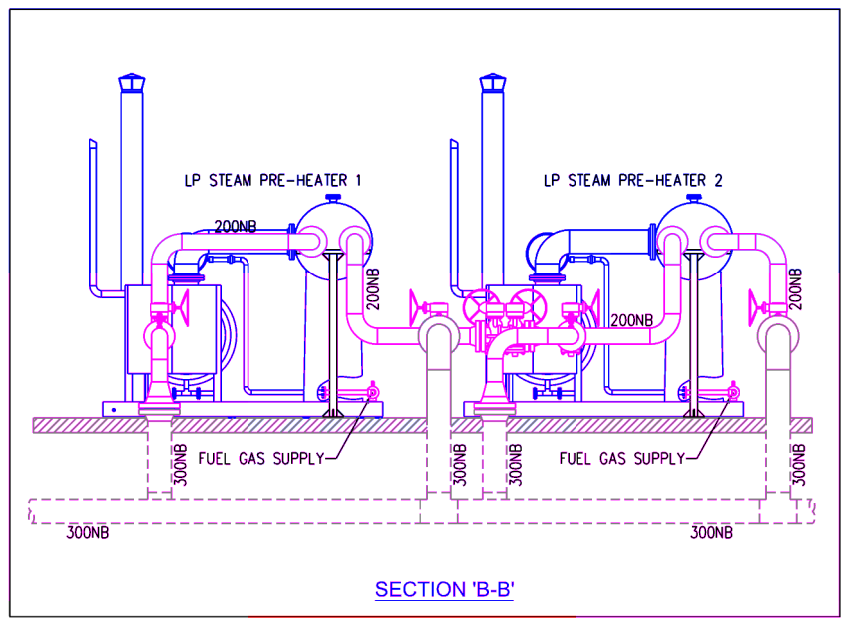
| DESIGN PARAMETERS | HP | IP | MP |
|----------------------------|------------|----------|------------|
| DESIGN PRESSURE | 70.0 barg | 7.0 barg | 0.3 barg |
| SAFE OPERATING LIMIT | 77.0 barg | 7.7 barg | 0.525 barg |
| MAXIMUM OPERATING PRESSURE | 70.0 barg | 7.0 barg | 0.3 barg |
| NORMAL OPERATING PRESSURE | 38-70 barg | 7.0 barg | 0.3 barg |

REFERENCE DRAWINGS

| REF. NO. | DESCRIPTION | REF. NO. | DESCRIPTION |
|--------------------|-------------------------|--------------------|-------------------------|
| CS074312-02-K-3001 | E.L.D. | CS074312-02-L-4014 | PIPING ISOMETRIC - L106 |
| CS074312-02-M-4000 | SITE LAYOUT | CS074312-02-L-4015 | PIPING ISOMETRIC - L107 |
| CS074312-02-M-4002 | HAZARDOUS AREA DRAWING | CS074312-02-L-4016 | PIPING ISOMETRIC - L108 |
| CS074312-02-L-4011 | PIPING ISOMETRIC - L103 | CS074312-02-L-4017 | PIPING ISOMETRIC - L109 |
| CS074312-02-L-4012 | PIPING ISOMETRIC - L104 | CS074312-02-L-4018 | PIPING ISOMETRIC - L110 |
| CS074312-02-L-4013 | PIPING ISOMETRIC - L105 | CS074312-02-M-4024 | PIPE SUPPORT DETAILS |

THE INFORMATION SHOWN ON THIS DRAWING IS CONFIDENTIAL AND IS THE COPYRIGHT OF CAPITA. IT MUST NOT BE COPIED OR REPRODUCED FOR TRANSMISSION TO ANY OTHER PARTIES WITHOUT THE EXPRESS WRITTEN PERMISSION OF CAPITA.

- NOTES:**
- ALL DIMENSIONS ARE IN MILLIMETRES.
 - THIS DRAWING IS BASED ON THE FOLLOWING DRAWINGS SUPPLIED BY NORTHERN GAS NETWORKS:
NGN DRAWING: NGN/NO/LBUR/SP-1 REV.0 SITE PLAN
PROHEAT DRAWING: 300-2004-08-001 REV.2 LITTLE BURDEN GA
 - WORKS TO BE GENERALLY IN ACCORDANCE WITH THE RECOMMENDATIONS OF IGE/MD/13; NGN/SP/PW/11; NGN/SP/E/28 AND NGN/SP/TR/24.
 - ALL WELDS TO COMPLY WITH NGN/SP/P/2.
 - ALL WELDS TO BE INSPECTED IN ACCORDANCE WITH NGN/SP/NDT/2.
 - ALL FABRICATIONS TO BE TESTED IN ACCORDANCE WITH NGN/PR/PT/1.
 - ALL PIPEWORK TO BE THOROUGHLY CLEANED, BOTH INTERNALLY AND EXTERNALLY, BEFORE ASSEMBLY.
 - ALL ABOVE GROUND PIPEWORK TO BE EXTERNALLY PAINTED IN ACCORDANCE WITH NGN/SP/PA/10. PAINT COLOUR - TBC.
 - ALL CRITICAL VALVES TO BE LOCKABLE.
 - MINIMUM DEPTH OF COVER FOR 90mm PE PIPE - 600mm.
 - MINIMUM BENDING RADIUS FOR 90mm PE PIPE - 1.35m.
 - ALL BY-PASS PIPEWORK AND ASSOCIATED CONCRETE BASES TO BE REMOVED BETWEEN VALVES 702175 AND 702167.



CAPITA
Utilities and Industrial

WARRINGTON OFFICE
4 Bowood Court, Calver Rd, Warrington, WA2 8QZ
T 01925 418333 F 01925 418800
www.capita.co.uk/infrastructure
Capita Property and Infrastructure Ltd

EDMUNDS OFFICE
2nd Floor, Elder House, Maltres Walk,
Edinburgh, EH1 3DX
T 0131 460 1200 F 0131 460 1201

Northern Gas Networks

PROJECT: LITTLE BURDON SITE UPGRADES

TITLE: PIPEWORK DETAILS - PRE-HEATERS

ISSUE: FOR COMMENT

DRAWN: FML CHECKED: APPROVED: DATE: 18.07.2014

SCALE: 1:50 ORIG SIZE: A1

PROJECT NO: CS074312-02 DRAWING NO: M-4005 REVISION: A