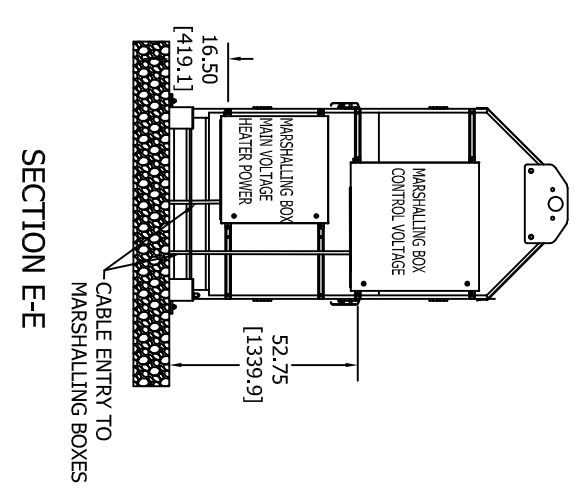
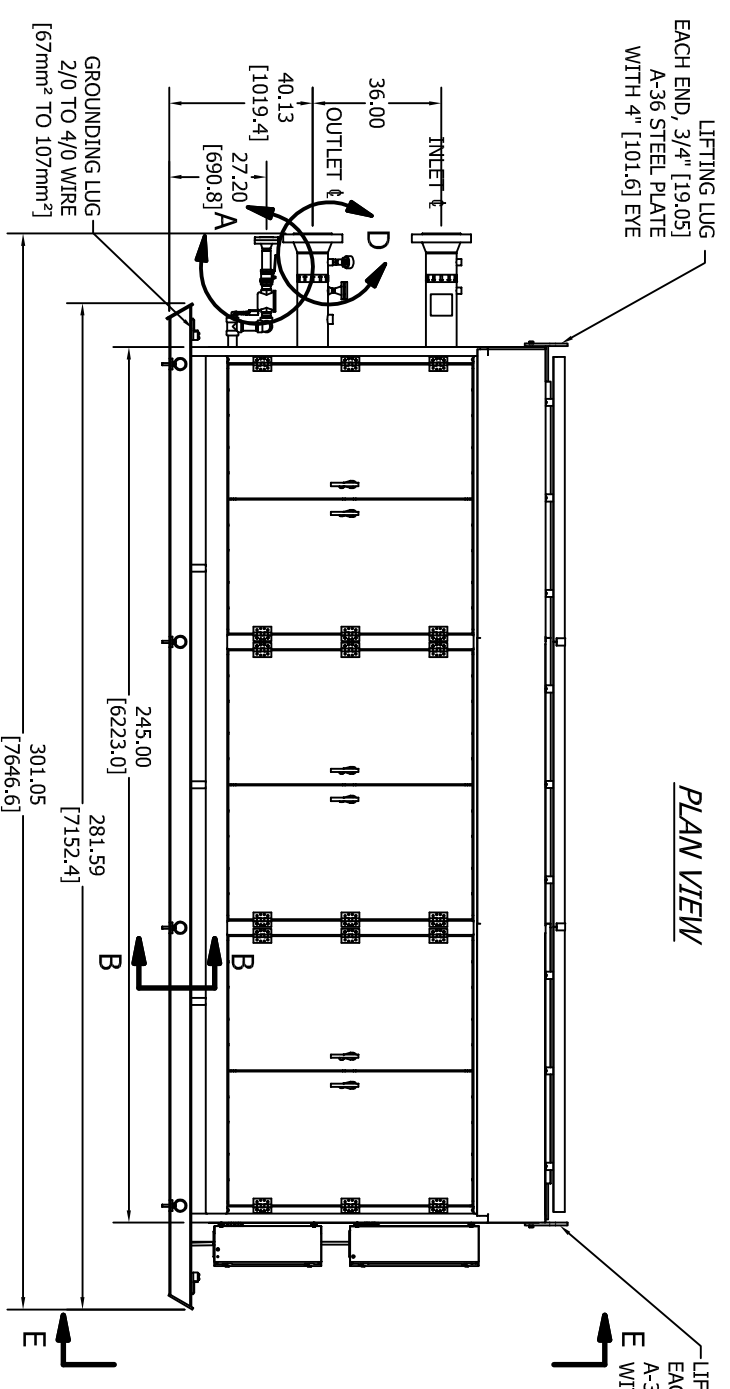
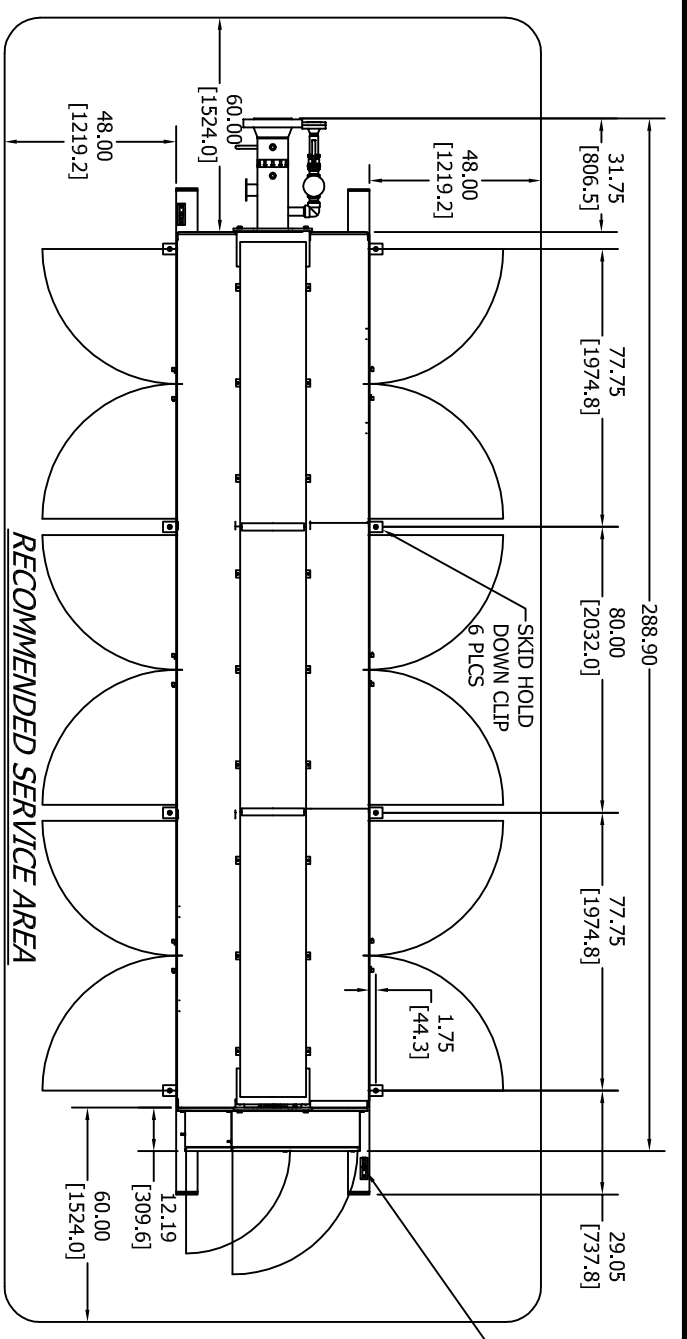
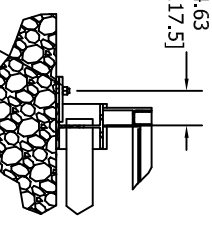
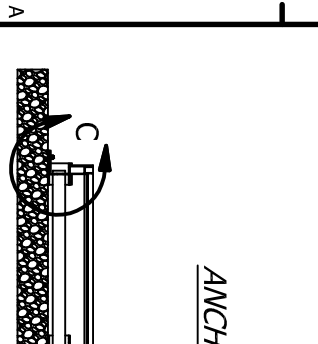


- NOTE:
1. WEIGHT OF APPROXIMATELY 11800 LBS [5352.39kg] TOTAL EVENLY DISTRIBUTED ACROSS THE SKID. NO DYNAMIC LOAD.
  2. GROUND LUG 2/0 TO 4/0 WIRE [67mm<sup>2</sup> TO 107mm<sup>2</sup>] LOCATED ON SKID BASE, TWO (2) PLACES.
  3. OWNER TO PROVIDE SERVICE TO THE MAIN POWER DISCONNECT. 400 VOLT, 3 PHASE, 50 HZ, 32 AMP SERVICE RECOMMENDED.
  4. UNIT IS SUITABLE FOR USE IN EX II 3G HAZARDOUS LOCATIONS.
  5. ALL DIMS IN [XX] ARE SI.



**SIDE ELEVATION**

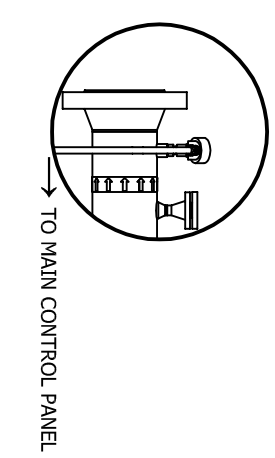
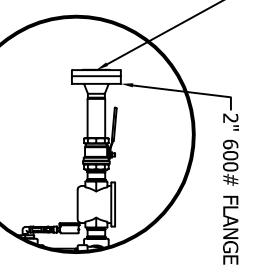


EXTERNAL FUEL SOURCE BY NGN

At 12 - 18" w.c. (3.0 - 4.5 kPa)

Pressure Relief sized for emergency overpressure not to exceed 5 psi. [35kPa]

1650 SCFH [47 SCMH]



There are provisions in the controls for an optional fuel pressure switch from the Owner's fuel supply system. Use of this input is optional.



BOX 827  
INDEPENDENCE, KANSAS 67301  
(620) 331-0750 1-800-835-0557  
sales@bruestcatalytic heaters.com

**NORTHERN GAS NETWORKS**

THIS PRINT AND THE INFORMATION CONTAINED THEREIN IS THE SOLE PROPERTY OF CATALYTIC INDUSTRIAL GROUP, INC. IT IS EXPRESSLY PROHIBITED TO REPRODUCE, TRANSMIT TO OTHERS OR USE IN ANY OTHER MANNER WHICH IS DETRIMENTAL TO THE INTERESTS OF CATALYTIC INDUSTRIAL GROUP, INC. THE RECIPIENT MAY ONLY USE THIS LOANED CONFIDENTIAL INFORMATION FOR THE PURPOSE IT WAS PROVIDED AND SHALL GUARD AGAINST ITS UNAUTHORIZED USE. APPROVAL FOR WIDER DISSEMINATION OR ADDITIONAL USES SHALL BE IN WRITING. THIS INFORMATION SHALL BE RETURNED UPON REQUEST.

WE RESERVE THE RIGHT TO MAKE IMPROVEMENTS/CHANGES AS CONDITIONS DICTATE.

JOB NO: B-0713-2	SCALE:	TOLERANCES: DIMENSIONS ARE IN INCHES.	FRACTIONS: 1/16, 1/8, 1/4, 3/8, 1/2, 3/4, 1	DECIMALS: .0001, .0005, .001, .005, .01, .05, .1, .5, 1	ANGLES: 15, 30, 45, 60, 90, 120, 150, 180
DWG BY: Lindag	DATE: 10/4/2013	SHIP TO: NORTHERN GAS NETWORKS	SOLD TO: NORTHERN GAS NETWORKS		
APPROVED BY:	DATE:	DRAWING DESCRIPTION			
		HC-1300 GENERAL ARRANGEMENT 8 IN 600# FLANGES, ALTERNATE FUEL SUPPLY			
FILE LOCATION: VAULT\DESIGNS\JOBS\2013\B-0713-2	DRAWING NO: 237-060-8	SHEET 1 OF 3	REV D	APPROVED BY:	
				DATE:	

LOCATION: CROSSGATES STATION	P.O.# 5055/5500002611
CUSTOMER: NORTHERN GAS NETWORKS	EQUIP.# EQUIPMENT #1243
	EQUIP NAME: HotCat HC-1300
APPROVED BY:	
DATE:	

REV	DATE	DRW	CKD	APPD	DATE	DESCRIPTION
D	27JUN14	LDG				AS BUILT
C	18JUN14	LDG				MOVED HI TEMP SHUT DOWN TRANSMITTER
B	06FEB14	LDG				UPDATED CLIENT NAME
A	17JAN14	LDG				UPDATES PER 1/16/2014 CONFERENCE CALL