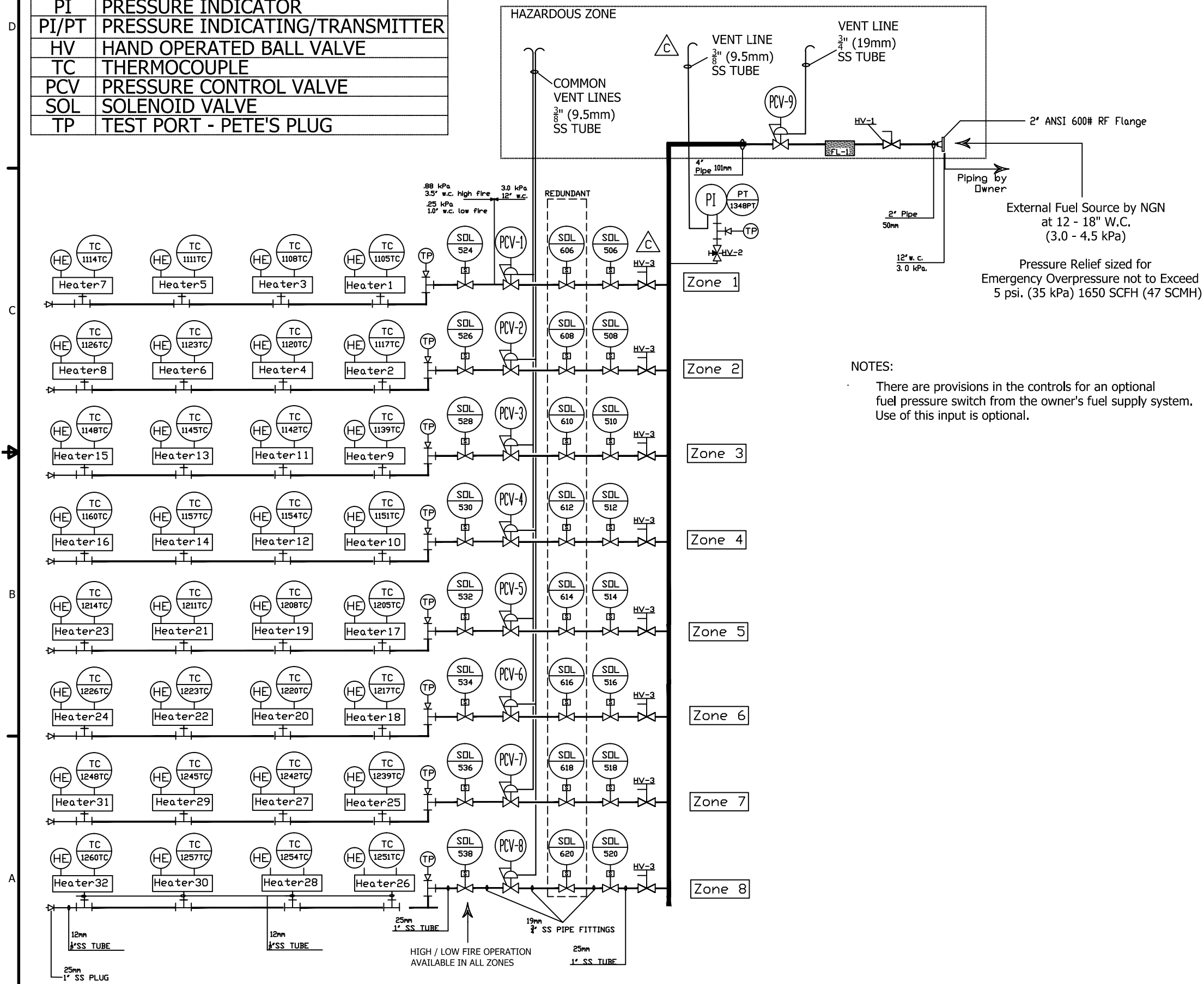


LEGEND	
FL	FILTER / DRYER
HE	HEATING ELEMENT
PI	PRESSURE INDICATOR
PI/PT	PRESSURE INDICATING/TRANSMITTER
HV	HAND OPERATED BALL VALVE
TC	THERMOCOUPLE
PCV	PRESSURE CONTROL VALVE
SOL	SOLENOID VALVE
TP	TEST PORT - PETE'S PLUG

FUEL INLET & GAS DISTRIBUTION



NOTES:
 There are provisions in the controls for an optional fuel pressure switch from the owner's fuel supply system. Use of this input is optional.

THIS PRINT AND THE INFORMATION CONTAINED HEREIN ARE THE PROPERTY OF CATALYTIC INDUSTRIAL GROUP, INC. IT IS EXPRESSLY PROHIBITED TO REPRODUCE, TRANSMIT TO OTHERS OR USE IN DETRIMENTAL TO THE INTERESTS OF CATALYTIC INDUSTRIAL GROUP, INC. THE RECIPIENT MAY ONLY USE THIS LOANED CONFIDENTIAL INFORMATION FOR THE SPECIFIC PURPOSES AUTHORIZED BY THE ORIGINAL GRANTEE AND SHALL GUARD AGAINST UNAUTHORIZED USE. APPROVAL FOR UNDER DISSEMINATION OF ADDITIONAL INFORMATION SHALL BE RETURNED UPON REQUEST.

WE RESERVE THE RIGHT TO MAKE IMPROVEMENTS/CHANGES AS CONDITIONS DICTATE.

NORTHERN GAS NETWORKS
 LOCATION: GANSTED U.K. UNIT #1
 P.O. # 5055/5500005440
 CUSTOMER: NORTHERN GAS NETWORKS
 EQUIP. # EQUIPMENT #1279
 EQUIP NAME: HC-2750 CONTAINER

BOX 827
 INDEPENDENCE, KANSAS 67301
 (620) 331-0750 1-800-835-0557
 sales@bruestcatalyticheaters.com

DATE: 16JAN15
 DATE: 16JAN15

SHIP TO: NORTHERN GAS NETWORKS
 DRAWING DESCRIPTION: HC-2750 U.K. CONTAINER, 8IN 600# FLANGES WITH EXTERNALLY REGULATED FUEL SOURCE
 DRAWING NO: SA010706

REV	DATE	APPD	DESCRIPTION
A	25FEB15	SRS	INITIAL RELEASE
B	17JUN15	LDG	ADDED ZONE SHUT OFF VALVE - HV-3 ADDED VENT LINE OFF PIPT RELEASED FOR G17 REVIEW
C	27AUG15	LDG	

APPROVED BY: [Signature]
 DATE: [Date]