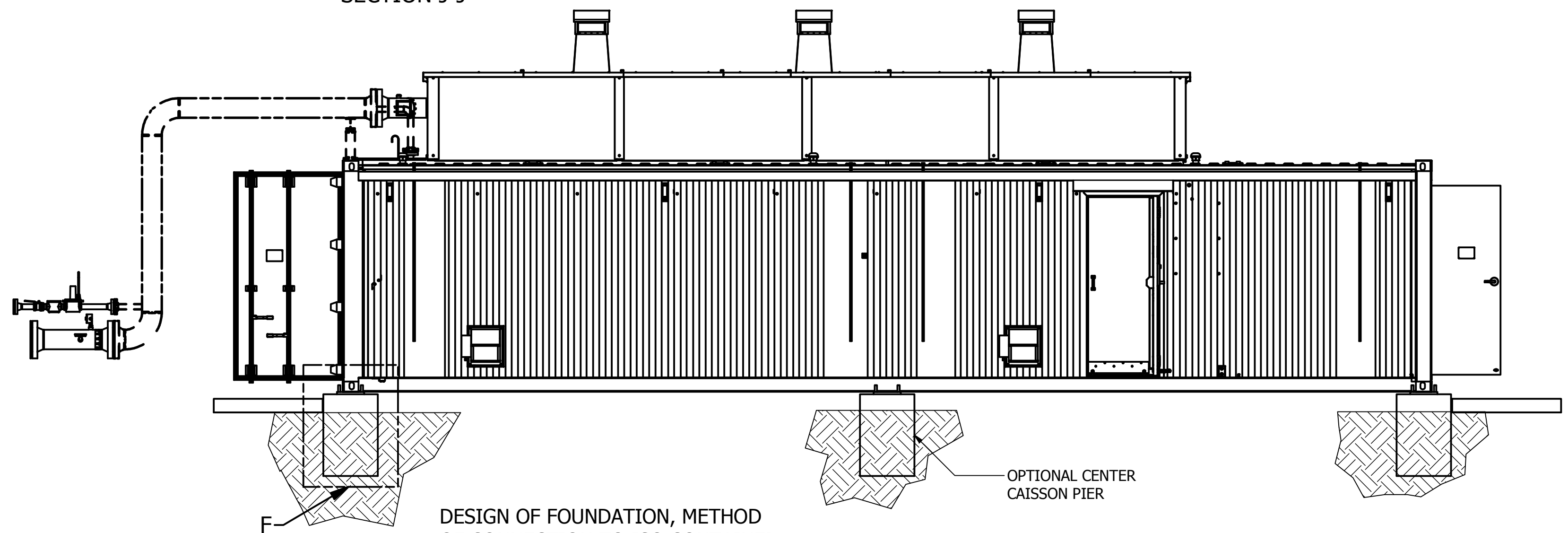


ESTIMATED WEIGHT APPROX 18,000 KG (36,000 LBS.) EVENLY DISTRIBUTED.



DESIGN OF FOUNDATION, METHOD OF CONNECTION TO ISO CONTAINER CONNECTOR AND ANY REQUIRED MATERIALS AND INSTALLATION INSPECTIONS ARE BY OWNER.

SIDE ELEVATION

		<b>NORTHERN GAS NETWORKS</b> BOX 827 INDEPENDENCE, KANSAS 67301 (620) 331-0750 1-800-835-0557 sales@bruestcatalyticheaters.com		LOCATION: GANSTEAD U.K. UNIT #1 P.O. # 5055/550005440 CUSTOMER: NORTHERN GAS NETWORKS EQUIP. # EQUIPMENT #1279 EQUIP NAME: HC-2750 CONTAINER APPROVED BY: DATE:	
JOB NO: B-0714-2 DWG BY: Lindag APPROVED BY: DRAWING DESCRIPTION: GENERAL ARRANGEMENT CIVIL DETAIL FILE LOCATION: Vault\Designs\Jobs\2014	SCALE: DO NOT SCALE DATE: 2/13/2015 DATE:	DIMENSIONS ARE IN INCHES. FRACTIONS DECIMALS 1/4 0.25 1/2 0.50 3/4 0.75 1 1.00 1 1/4 1.25 1 1/2 1.50 1 3/4 1.75 2 2.00 2 1/4 2.25 2 1/2 2.50 2 3/4 2.75 3 3.00 3 1/4 3.25 3 1/2 3.50 3 3/4 3.75 4 4.00	SHEET 5 OF 8 REV E DRAWING NO: GA010706	THIS PRINT AND THE INFORMATION CONTAINED THEREIN IS THE SOLE PROPERTY OF CATALYTIC INDUSTRIAL GROUP, INC. IT IS EXPRESSLY LOANED TO YOU FOR YOUR USE ONLY AND IS NOT TO BE REPRODUCED, COPIED, TRANSMITTED, OR DISSEMINATED IN ANY MANNER WHICH IS DETRIMENTAL TO THE INTERESTS OF CATALYTIC INDUSTRIAL GROUP, INC. THE RECIPIENT MAY ONLY USE THIS LOANED CONFIDENTIAL INFORMATION FOR THE PURPOSE IT WAS PROVIDED AND SHALL GUARD AGAINST IT'S UNAUTHORIZED USE. ANY ADDITIONAL USES SHALL BE IN WRITING. THIS INFORMATION SHALL BE RETURNED UPON REQUEST. WE RESERVE THE RIGHT TO MAKE IMPROVEMENTS/CHANGES AS CONDITIONS DICTATE.	
		<b>REVISION HISTORY</b>			
		REV	DATE	APPD	DESCRIPTION
		A	25FEB15		INITIAL RELEASE
		B	03MAY15		NGN REVIEW RELEASE
		C	09APR15		ADDED SIDE DOORS, LOWER LOUVERS AND SPOOLS
		D	4/17/2015		UPDATED DRAWINGS
		E	10/20/2015		UPDATED WEIGHT